



ARIZONA INSTRUMENT LLC

# VAPOR PRO<sup>®</sup>

## COMMUNICATIONS

## OPERATION MANUAL

**Version 1.0.3**

September 2010

Arizona Instrument LLC  
3375 N Delaware Street  
Chandler, AZ 85225

(800) 528-7411

(602) 470-1414

Fax (480) 804-0656

<http://www.azic.com>

email:

[azi@azic.com](mailto:azi@azic.com) - General

[intl@azic.com](mailto:intl@azic.com) - International

[support@azic.com](mailto:support@azic.com) - Customer Support

An up-to-date electronic copy of this manual can be found at:

<http://www.azic.com/downloads.aspx>

700-0098-C

# VAPOR PRO<sup>®</sup> COMMUNICATIONS Operation Manual



## PROPRIETARY RIGHTS NOTICE

This manual contains valuable information and material developed by Arizona Instrument LLC for use with the Computrac<sup>®</sup> **VAPOR PRO<sup>®</sup>**, **VAPOR PRO<sup>®</sup> Rx**, **VAPOR PRO<sup>®</sup> Fx**, and the **VAPOR PRO<sup>®</sup> COMMUNICATIONS** Package. No part of this manual or the accompanying software can be reproduced or transmitted in any form or by any means, electronic, mechanical, or otherwise. This includes photocopying and recording or in connection with any information storage or retrieval system without the express written permission of Arizona Instrument LLC.

ALL RIGHTS RESERVED

© Copyright 2003-2010, Arizona Instrument LLC

Windows<sup>®</sup>, Office<sup>®</sup> and Excel<sup>®</sup> are registered trademarks of Microsoft Corporation in the United States and other countries.

## TABLE OF CONTENTS

1.	Welcome to VAPOR PRO <sup>®</sup> COMMUNICATIONS Package _____	5
2.	Instrument setup & Configuration _____	6
3.	Installing the VAPOR PRO <sup>®</sup> COMMUNICATIONS Package _____	7
	<b>System Requirements</b> _____	<b>7</b>
	<b>Administrator and Power User Privileges</b> _____	<b>7</b>
	<b>Installation</b> _____	<b>8</b>
	<b>To Uninstall the VAPOR PRO<sup>®</sup> COMMUNICATIONS program</b> _____	<b>8</b>
4.	Starting the VAPOR PRO <sup>®</sup> COMMUNICATIONS program _____	8
5.	Main Form _____	9
	<b>Menus</b> _____	<b>9</b>
6.	Edit Memory Starts _____	10
	<b>Features of this window</b> _____	<b>11</b>
	<b>Context Menus</b> _____	<b>11</b>
7.	Manage Named Memory Start Set _____	12
	<b>Controls</b> _____	<b>13</b>
8.	Edit Memory Start Set _____	13
	<b>Controls</b> _____	<b>14</b>
	<b>Features of this window</b> _____	<b>14</b>
	<b>Context Menu</b> _____	<b>14</b>
9.	Select Stored Tests _____	15
	<b>Controls</b> _____	<b>15</b>
10.	VAPOR PRO <sup>®</sup> COMMUNICATIONS Options _____	16
	<b>Controls</b> _____	<b>17</b>
11.	Parts and Accessories _____	18
12.	Networking VAPOR PRO <sup>®</sup> 's _____	19
13.	Troubleshooting _____	20
	<b>Possible Problems and Solutions</b> _____	<b>20</b>
	<b>Microsoft Excel<sup>®</sup> Macro Security</b> _____	<b>21</b>
	<b>Memory Start Definition file</b> _____	<b>24</b>
	<b>Stored Test Definition file</b> _____	<b>24</b>
14.	Support _____	25

15. APPENDIX A – DATA CONVERSION UTILITY _____	26
16. APPENDIX B – SOFTWARE VERSION HISTORY _____	28

An up-to-date electronic copy of this manual can be found at:

<http://www.azic.com/downloads.aspx>

## 1. Welcome to VAPOR PRO<sup>®</sup> COMMUNICATIONS Package

The **VAPOR PRO<sup>®</sup> COMMUNICATIONS** software is a Windows<sup>®</sup> based program designed to collect data from one or more **VAPOR PRO<sup>®</sup>**, **VAPOR PRO<sup>®</sup> Rx**, or **VAPOR PRO<sup>®</sup> Fx** instruments to a personal computer through the RS-232 interface (COM port). The software can download data from any of a number of **VAPOR PRO<sup>®</sup>** units to a personal computer for data analysis using Microsoft<sup>®</sup> Excel or for long-term storage. The **VAPOR PRO<sup>®</sup> COMMUNICATIONS** software can also upload memory start test parameters from the central PC to the **VAPOR PRO<sup>®</sup>**'s to ease and simplify multi-unit programming.

Help is available on many functions within the communications program. Press the F1 key to activate the help files.

The **VAPOR PRO<sup>®</sup> COMMUNICATIONS** Package is used to:

- Download/Edit/Upload memory starts from one or more **VAPOR PRO<sup>®</sup>** instruments
- Download test and graph data from one or more **VAPOR PRO<sup>®</sup>** instruments
- Print test data, graphs, and memory starts.

Benefits of the **VAPOR PRO<sup>®</sup> COMMUNICATIONS** Package:

- *Program, edit, download memory starts from your PC*
  - Easily manage and standardize test parameter sets to single or multiple units
  - Maintain backup copies of memory starts on a PC or network.
- *Customizable report formats*
  - Provides precisely the information you need
- *Built-in desk-top tutorial*
  - Walks new users through configuration and setup
- *Instrument model and serial number printed on reports*
  - Maintains data trails
- *Enable pass/fail criteria*
  - Provides quick assessment of product against quality standards or SOP's
- *Microsoft Excel<sup>®</sup> format*
  - Data is stored in spreadsheet format for easy reporting, management, and analysis.

The **VAPOR PRO<sup>®</sup> COMMUNICATIONS** Package (AZI P/N: Y990-0196) includes the following:

710-0049	<b>VAPOR PRO<sup>®</sup> COMMUNICATIONS</b> software (on CD)
6000 1044	RS232 Null Modem Cable
700-0098	<b>VAPOR PRO<sup>®</sup> COMMUNICATIONS</b> user's manual (on CD)

There is a set of five tutorials that explain the set-up, configuration and usage of the **VAPOR PRO<sup>®</sup> COMMUNICATIONS** software. These tutorials are available on the AZI website at [www.azic.com](http://www.azic.com), as well as in the Arizona Instrument directory on your Start Menu if you have installed the software.

## 2. Instrument setup & Configuration

Connecting a **VAPOR PRO<sup>®</sup>** series instrument to a PC to utilize **VAPOR PRO<sup>®</sup> COMMUNICATIONS** is a simple process that involves connecting the included RS232 Null Modem cable (AZI P/N: 6000 1044) between the serial port on the PC and the computer communication port on the **VAPOR PRO<sup>®</sup>**. If there is not an available serial port on the PC, a USB-to-RS232 adapter (AZI #990-0238) can be used to connect to an available USB port on the PC instead. In the **VAPOR PRO<sup>®</sup>** menu, the external printer output port must be set to RS-232 and the printer driver must be set to EPSON ESC/P2.

A step-by-step tutorial describing this process, *Tutorial 1: Connecting the VAPOR PRO<sup>®</sup>*, is available on the AZI website at [www.azic.com](http://www.azic.com), as well as in the Arizona Instrument directory on your Start Menu if you have installed the **VAPOR PRO<sup>®</sup> COMMUNICATIONS** software.

To connect multiple **VAPOR PRO<sup>®</sup>**'s requires additional available serial ports on the target PC or the utilization of a Serial to Ethernet adapter (AZI P/N: 990-0209 or 990-0210) to connect the instruments to a network. For more information on using a network to connect to the instruments, see **Networking VAPOR PRO<sup>®</sup>**'s on page 19.

### 3. Installing the VAPOR PRO<sup>®</sup> COMMUNICATIONS Package

#### System Requirements

1. One or more **VAPOR PRO<sup>®</sup>** series instruments:
  - a. **VAPOR PRO<sup>®</sup>** or **VAPOR PRO<sup>®</sup> Rx**– firmware version 1.13.1 or higher, or
  - b. **VAPOR PRO<sup>®</sup> Fx** – firmware version 1.15.1 or higher
2. Windows<sup>®</sup> XP or Windows<sup>®</sup> 7 (32 or 64-bit) (**VAPOR PRO<sup>®</sup> COMMUNICATIONS** has been tested on the English-US versions of Windows)
3. Internet Explorer version 5.01 or higher
4. One unused RS-232 serial port, or for network installations, an Ethernet port and a Serial to Ethernet adapter. See **Parts and Accessories** on page 18 for more information.
  - a. If an RS-232 serial port is not available, a USB-to-RS232 adapter (AZI #990-0238) can be used to connect to a USB port instead.
5. Microsoft Excel<sup>®</sup> XP (2002) to Excel<sup>®</sup> 2010 is required to view and analyze stored data.

	Windows <sup>®</sup> XP	Windows <sup>®</sup> 7
Processor	1.0 GHz or faster	1.0 GHz or faster 32-bit (x86) or 64-bit (x64) processor
Memory	196 Mb (256 Mb recommended)	1 Gb RAM (32-bit system) 2 Gb RAM (64-bit system)
Hard Disk <sup>1</sup>	300 Mb	300 Mb (32-bit system) 630 Mb (64-bit system)

<sup>1</sup> Hard disk space requirements include installing the Microsoft .NET Framework version 2.0

#### Administrator and Power User Privileges

The **VAPOR PRO<sup>®</sup> COMMUNICATIONS** Package can be installed for the current user or for all users. Local administrator privileges on the target PC are required to install for all users.

Users of the software must be at least Power Users on the target PC in order to use the software successfully. This setting can be changed by an administrator using the user accounts selection in the PC Control Panel.

**Note:** The **VAPOR PRO<sup>®</sup> COMMUNICATIONS** Package requires the Microsoft .NET Framework version 2.0 or higher. If your computer does not have the .NET Framework installed, the **VAPOR PRO<sup>®</sup> COMMUNICATIONS** Package setup will install it. If you require a non-English version of the .NET Framework, you must download it from Microsoft's web site or install it through Windows Update. Installation of the .NET Framework requires Administrator privileges on the target PC. It is recommended that you contact your IT department or computer support personnel before installing this software.

## Installation

1. Insert the **VAPOR PRO® COMMUNICATIONS** Package install CD into the CD or DVD drive on your computer.
2. The setup program should start automatically.
  - If the setup program does not automatically start, click the **Start** button.
  - Click **Run**.
  - Type **D:\Setup.exe** and hit **Enter**. (where D: is the letter of your CD or DVD drive.)

Follow the instructions in the setup wizard to complete the installation.

## To Uninstall the **VAPOR PRO® COMMUNICATIONS** program

1. On Windows® XP, go to Add/Remove Programs in the Control Panel.  
On Windows® 7, go to Programs and Features in the Control Panel.
2. Find and select "**VAPOR PRO® COMMUNICATIONS**" from the list of installed programs.
3. Click the [Remove] or [Uninstall] button to uninstall.

Note: This will only uninstall the **VAPOR PRO® COMMUNICATIONS** Package. It will not uninstall the Microsoft .NET Framework. The .NET Framework is a separate entry in Add/Remove Programs.

## 4. Starting the **VAPOR PRO® COMMUNICATIONS** program

To start **VAPOR PRO® COMMUNICATIONS** Package:

Click the **VAPOR PRO® COMMUNICATIONS** icon on the Windows desktop

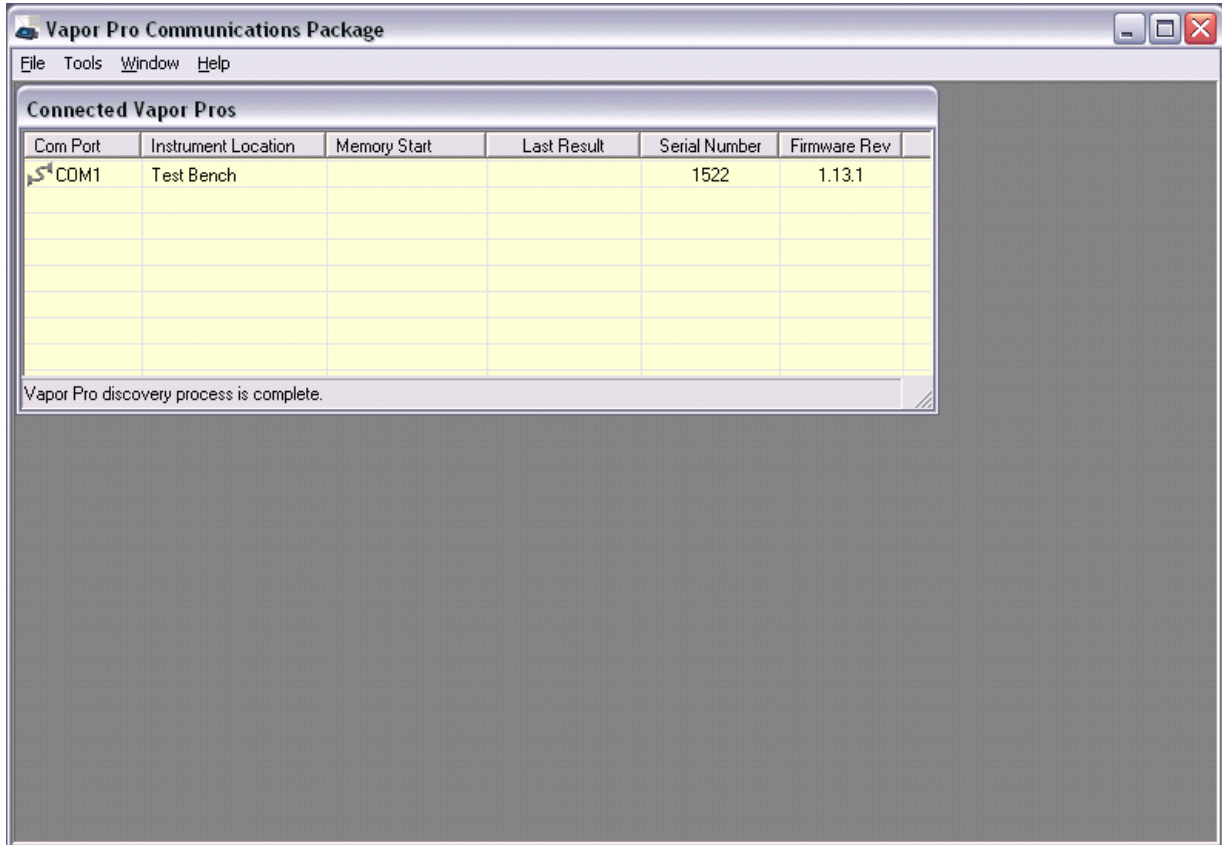
or

Go to the Start menu and click All Programs → Arizona Instrument → **VAPOR PRO® COMMUNICATIONS**.

*Tutorial 2: Starting **VAPOR PRO® COMMUNICATIONS*** is available on the AZI website at [www.azic.com](http://www.azic.com), as well as in the Arizona Instrument directory on your Start Menu if you have installed the **VAPOR PRO® COMMUNICATIONS** software. This tutorial provides visual step-by-step instructions for starting the software.

## 5. Main Form

Below is the Main Screen of the **VAPOR PRO<sup>®</sup> COMMUNICATIONS** software.



## Menus

The menu options available from the Main Screen are listed and explained below:

### File

1. **Import**
  2. **Memory Starts** - Imports previously exported memory starts from a text file.
  3. **Memory Start Definitions** - Imports a new/updated memory start definitions file.
  4. **Stored Test Definitions** - Imports a new/updated stored test definitions file.
5. **Export**
  6. **Memory Starts** - Exports selected memory starts to a text file.
  7. **Stored Data** - Exports selected test data to a comma delimited text file.
8. **Exit** - Closes all COM ports and exits the program.

## Tools

1. **Scan for VAPOR PRO®s** - Immediately scans all unused COM ports for **VAPOR PRO®** instruments.
2. **Manage Named Sets** - Opens the [Manage Named Sets](#) window.
3. **Options** - Opens the [VP-Comm options](#) window.

## Window

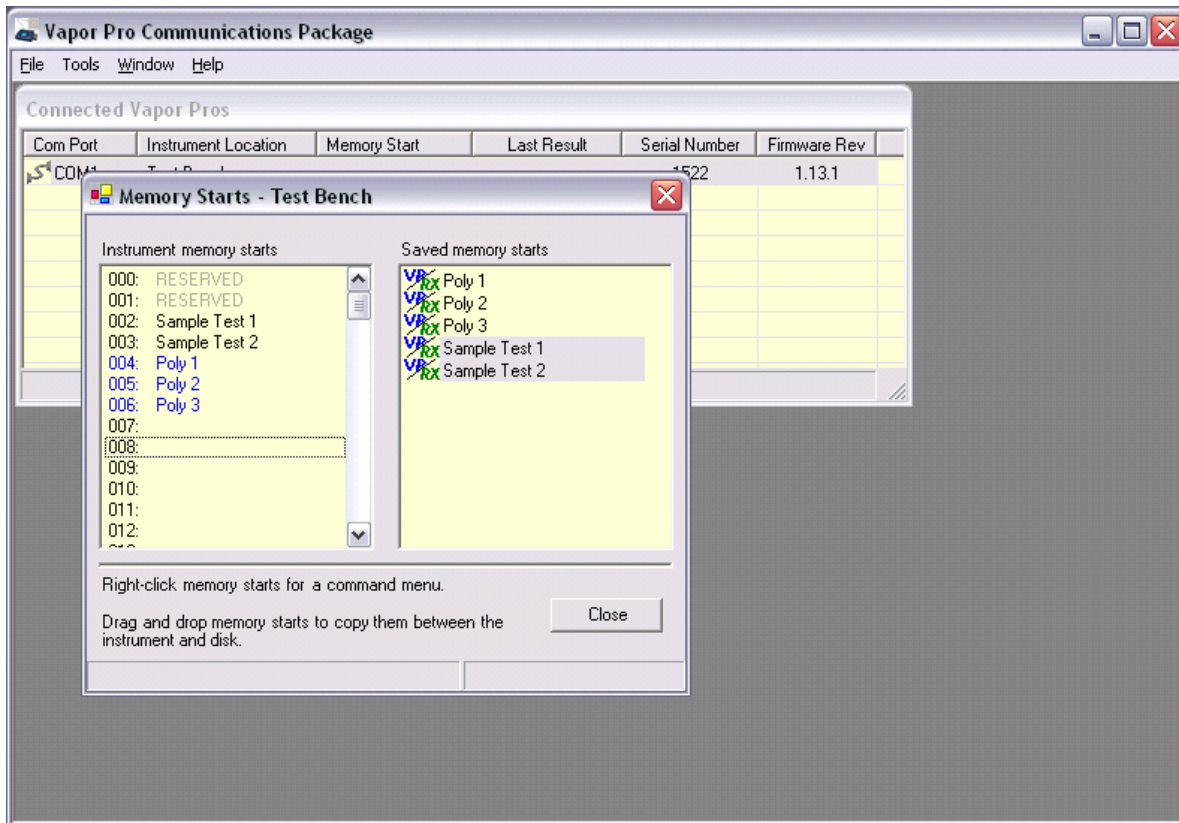
1. **Cascade** - Organizes the open windows in a cascading order.
2. **Tile Horizontally** - Organizes the open windows tiled horizontally.
3. **Tile Vertically** - Organizes the open windows tiled vertically

## Help

1. **Contents** - Opens the online help file to the Contents page.
2. **Index** - Opens the online help file to the Index page.
3. **Search** - Opens the online help file to the Search page.
4. **About VP-Comm** - Displays the About dialog with program version information.

## 6. Edit Memory Starts

*Tutorial 3: Editing Memory Starts* is available on the AZI website at [www.azic.com](http://www.azic.com), as well as in the Arizona Instrument directory on your Start Menu if you have installed the **VAPOR PRO® COMMUNICATIONS** software. This tutorial provides visual step-by-step instructions for downloading, editing, and uploading memory starts between the instrument(s) and the PC.



## Features of this window

### **Drag and Drop**

Both the Instrument memory starts list and the Saved memory starts list are drag-and-drop enabled. Memory starts can be saved from the **VAPOR PRO**<sup>®</sup> to disk by selecting and dragging memory starts from the Instrument list on the left to the Saved list on the right. Likewise, memory starts can be copied from the saved list to the **VAPOR PRO**<sup>®</sup> the same way.

The memory starts on the **VAPOR PRO**<sup>®</sup> instrument can be re-ordered also. Select the memory starts you want to move and drag them to their new position. A black line will appear and follow your mouse showing you where they will be dropped.

## Context Menus

The Instrument memory starts list has a context (right-click) menu with the following commands:

1. **Edit** (this is also the default action when a memory start is double-clicked)  
Opens the Edit Memory Start Parameters window to edit the selected memory start.
2. **Load Named Set**  
Clears the current memory starts and loads the memory starts from a named memory start set into this **VAPOR PRO**<sup>®</sup>.
3. **Print Selected**  
Prints only the selected memory starts and their parameters.
4. **Print All**  
Prints all memory starts and their parameters
5. **Send to VAPOR PRO**<sup>®</sup>  
Uploads the selected memory starts back to the **VAPOR PRO**<sup>®</sup>.
6. **Send All Changed**  
Uploads all changed (shown in **Blue** text) memory starts to the **VAPOR PRO**<sup>®</sup>.
7. **Clear Parameters**  
Clears the parameters of the selected memory starts

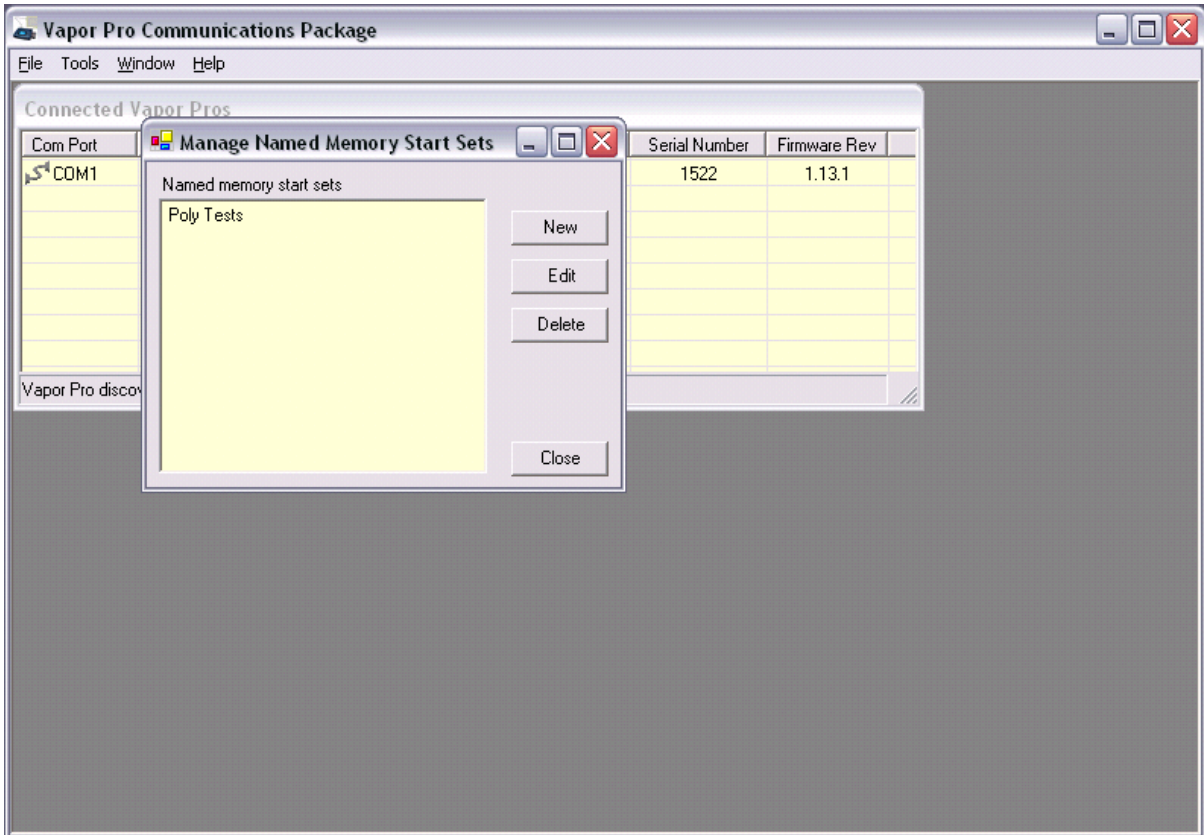
The Saved memory starts list has a context (right-click) menu with the following commands:

1. **Edit Name**  
Allows you to change the name of a saved memory start to prevent a naming conflict.
2. **Delete**  
Deletes the selected saved memory starts from disk.

## 7. Manage Named Memory Start Set

Named Memory Start Sets are a quick and easy way to standardize the memory starts across multiple **VAPOR PRO**<sup>®</sup> instruments.

*Tutorial 5: Using Named Memory Start Sets* is available on the AZI website at [www.azic.com](http://www.azic.com), as well as in the Arizona Instrument directory on your Start Menu if you have installed the **VAPOR PRO**<sup>®</sup> **COMMUNICATIONS** software. This tutorial provides visual step-by-step instructions for creating and editing Memory Start Sets and programming an instrument with a Memory Start Set.



## Controls

### Named memory start sets list

Lists the named memory start sets currently saved in the memory starts folder.

### New button

Creates a new named memory start set. You will be prompted for a name for the set then taken to the **Edit Memory Start Set** window.

### Edit button

Allows you to add and remove memory starts from the selected named set via the **Edit Memory Start Set** window.

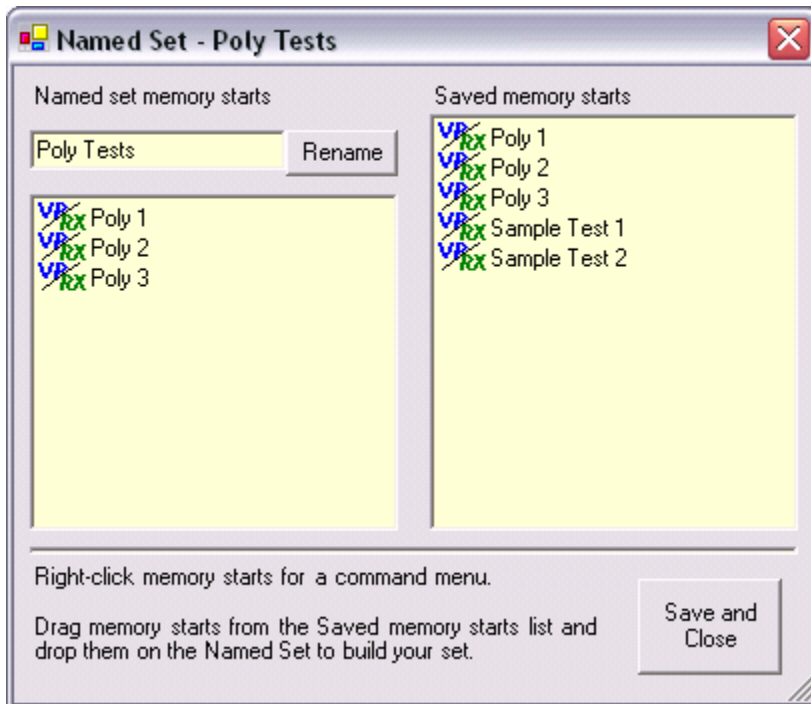
### Delete button

Deletes the selected named memory start set from disk.

### Close button

Closes the window.

## 8. Edit Memory Start Set



## Controls

### **Named set memory starts textbox**

Here is the name of your named memory start set. This textbox cannot be typed into directly. Use the Rename to rename your set.

### **Rename button**

Opens a window for you to edit the name of your memory start set.

### **Named set memory starts list**

The memory starts in your set.

### **Saved memory starts list**

The memory starts saved on disk.

### **Save and Close button**

Saves the set and closes this window

## Features of this window

### **Drag and Drop**

Both the Named set memory starts list and the Saved memory starts list are drag-and-drop enabled. Memory starts can be added to the set by selecting memory starts in the Saved memory starts list on the right and dragging them to the Named set memory starts list on the left.

The memory starts in the Named set memory starts list can be re-ordered also. Select the memory starts you want to move and drag them to their new position. A black line will appear and follow your mouse showing you where they will be dropped.

## Context Menu

The Named set memory starts list has a context (right-click) menu with the following command:

### **Remove**

Removes the selected memory starts from the set.

## 9. Select Stored Tests

**Tutorial 4: Downloading and Viewing Test Data** is available on the AZI website at [www.azic.com](http://www.azic.com), as well as in the Arizona Instrument directory on your Start Menu if you have installed the **VAPOR PRO® COMMUNICATIONS** software. This tutorial provides visual step-by-step instructions for downloading and viewing test data from the instrument(s) on the PC.

The Select Stored Tests window (below) narrows down a search for memory starts before displaying the results in the **List Tests** window. This is currently only used when exporting saved tests.

The screenshot shows a dialog box titled "Select Stored Tests to Export". It features a "Date Range" section with two date pickers set to "7/ 6/2005". Below this are dropdown menus for "Memory start name:", "Lot number:", and "Product ID:", each showing "(any ...)" as the selected value. To the right, an "Instrument:" list box contains "Test Bench" with a checked checkbox. "OK" and "Cancel" buttons are located at the bottom.

## Controls

### All Dates

All test dates will be included in the query.

### Date Range

Only dates that fall within the Start date and End dates (inclusive) will be included in the query.

### Start date

The earliest test date to include in the query results.

### End date

The latest test date to include in the query results.

**Memory start name**

Allows you to search for tests run on any memory start or just one specific memory start.

**Lot number**

Allows searching for tests from a specific lot number.

**Product ID**

Allows searching for tests with a specific product ID.

**Instrument list**

Allows searching for tests run on specific **VAPOR PRO**<sup>®</sup> instruments.

**OK button**

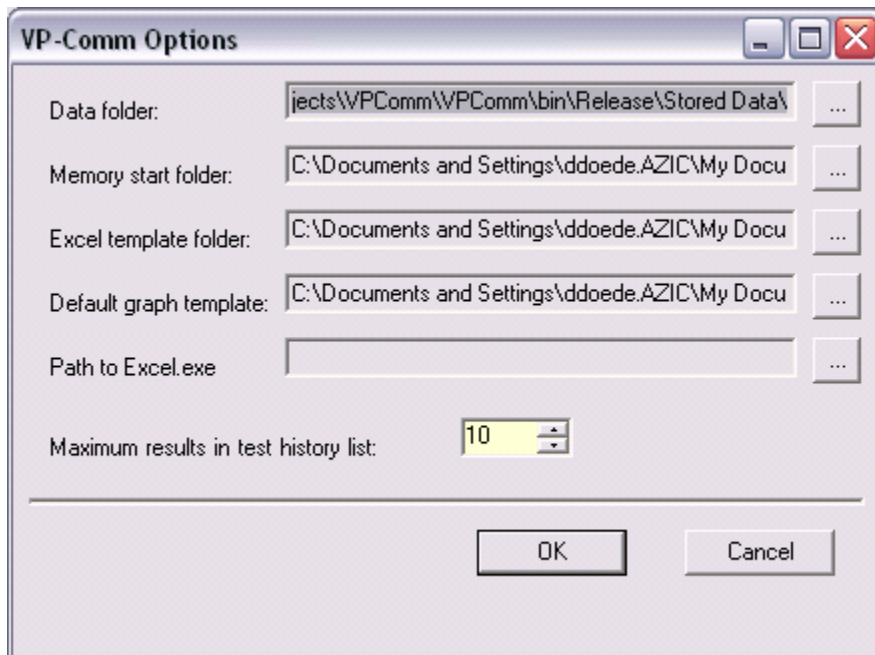
Accepts the search criteria, closes this window, and displays the search results.

**Cancel button**

Closes this window without running the search.

## 10. VAPOR PRO<sup>®</sup> COMMUNICATIONS Options

The Options dialog box is displayed below, followed by explanations of the fields.



## Controls

### Data folder

This is the folder where the saved test database is stored. It is also the default save location for exported tests. It can be a local or network folder.

### Memory start folder

This is the folder where memory starts and named memory start sets are stored. It can be a local or network folder.

### Excel template folder

This is where the Excel template files that the **VAPOR PRO<sup>®</sup> COMMUNICATIONS** Package uses. It can be a local or network folder.

### Default graph template

This is the default template used when you view saved tests from the **Connected VAPOR PRO<sup>®</sup>**'s context menu. The template *DefaultSingleTestGraph.xlt* is included with the **VAPOR PRO<sup>®</sup> COMMUNICATIONS** Package. It shows all end of test data and both the Total Moisture graph and the Rate graph.

### Path to Excel.exe

This field is normally not necessary. However with some installations of Microsoft Office, Windows cannot find Excel on it's own. If **VAPOR PRO<sup>®</sup> COMMUNICATIONS** gives you an error saying MS Excel cannot be found, browse to Excel.exe manually here. It is usually found:

Office XP (2002)	C:\Program Files\Microsoft Office\Office10
Office 2003	C:\Program Files\Microsoft Office\Office11
Office 2007	C:\Program Files\Microsoft Office\Office12 (32-bit Windows <sup>®</sup> )
Office 2007	C:\Program Files (x86)\Microsoft Office\Office12 (64-bit Windows <sup>®</sup> )
Office 2010	C:\Program Files\Microsoft Office\Office14 (32-bit Windows <sup>®</sup> )
Office 2010	C:\Program Files (x86)\Microsoft Office\Office14 (64-bit Windows <sup>®</sup> )

### Maximum results in test history list

This is the maximum number of past tests that will be displayed in the View Test Results menu in the context menu for the **Connected VAPOR PRO<sup>®</sup>**'s window.

### OK button

Saves the changes to the options and closes the window.

### Cancel button

Closes the options window without saving changes.

## 11. Parts and Accessories

<b>Y990-0196</b>	<b>VAPOR PRO® Communications Package</b>	<b>710-0049</b>	VAPOR PRO® Communications software
		<b>6000 1044</b>	RS232 Cable

**990-0209**      **4-Port Serial to  
Ethernet  
Adapter**



**990-0210**      **1-Port Serial to  
Ethernet  
Adapter**



**990-0238**      **USB-to-RS232  
Adapter**



## 12. Networking VAPOR PRO<sup>®</sup>'s

To connect **VAPOR PRO<sup>®</sup>'s** to a network instead of directly to a PC, a Serial to Ethernet Adapter (AZI P/N: 990-0209 or 990-0210) is required.

- 1) Connect an RS-232 Null Modem cable (AZI P/N: 6000 1044) from the **VAPOR PRO<sup>®</sup>'s** PC connection to the Serial to Ethernet Adapter.
- 2) The following steps are to be carried out by your local IT person.
  - a. Connect the Serial to Ethernet Adapter to your local area network.
  - b. Install the drivers for the Serial to Ethernet Adapter according to the instructions provided with the adapter (local computer Administrator rights are required.)
  - c. Run the VLINX ESP Manager, click Start → All Programs → B&B Electronics → VLINX → ESP Servers → VLINX ESP Manager.
  - d. Set each port on the Serial to Ethernet Adapter as shown below. Use your own unique identifying name for the *Server name*, and your static *IP address, Netmask, and Gateway*.
  - e. Install the virtual com ports according to the instructions provided with the Serial to Ethernet adapter.
- 3) Start the **VAPOR PRO<sup>®</sup> COMMUNICATIONS** program.

Server Properties

B&B Electronics  
VLINX ESP

Server name: VLinx1

Serial number: 0521010986

Password:

DHCP: Disable

IP address: 192.168.2.236

Netmask: 255.255.255.0

Gateway: 192.168.2.1

MAC address: 00:08:B4:11:2A:EA

Version & Date: 1.8 & 4/6/05

Link status: 10/Half Duplex

Hardware ID: NA

Serial port: 1

Baud rate: 9600

Data/Stop bits: 8-1

Parity: None

Flow control: None

Protocol: TCP

Serial timeout: 0 (0-65535 sec)

TCP alive timeout: 0 (0-255 min)

Connection mode: Server

Delimiter HEX 1: 00

Delimiter HEX 2: 00

Force transmit: 1 x100ms (0-65535)

Port status: Not Connected

TCP/UDP port: 4000

Serial port mode: RS232

Connection at: Power up

Maximum connection: 1

Remote IP address: 255.255.255.255

Update Cancel

Serial to Ethernet Adapter Configuration

## 13. Troubleshooting

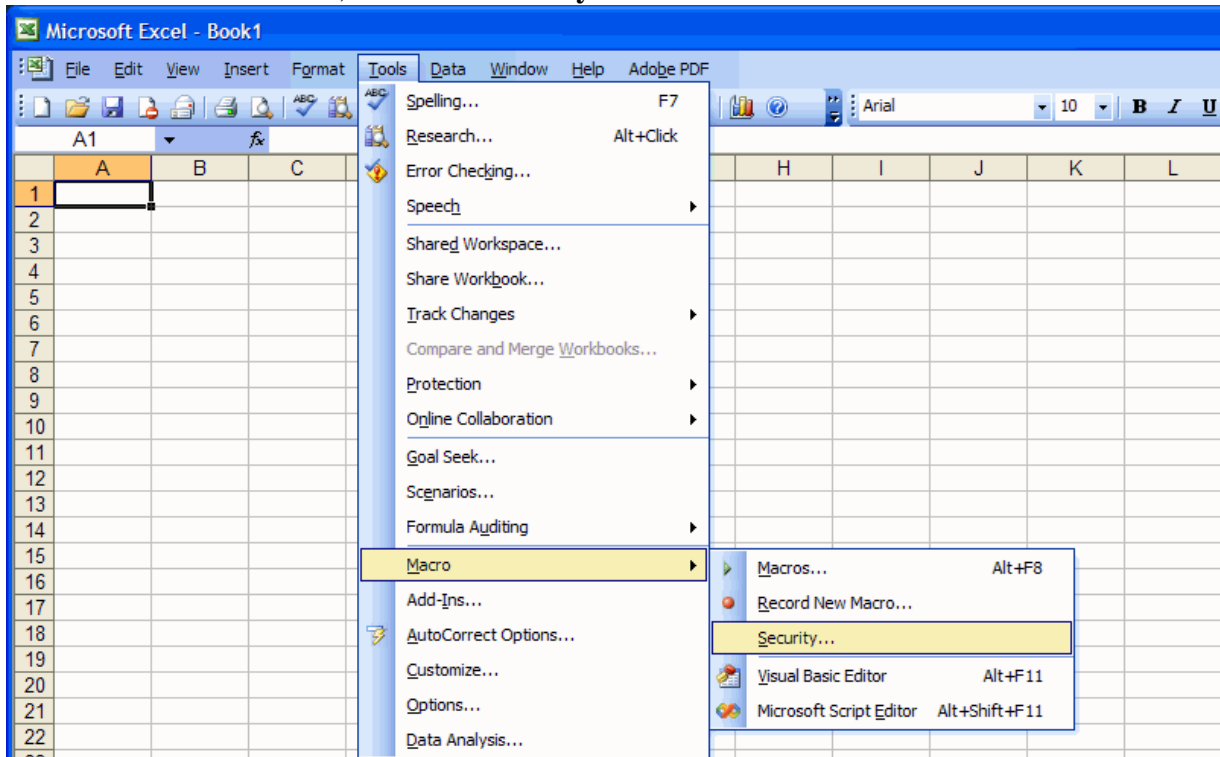
### Possible Problems and Solutions

<u>Symptom</u>	<u>Likely Cause</u>	<u>Solution</u>
Database Errors	User is not a Power User on the target PC	Have System Administrator/IT Dept modify the current user to a Power User through the Control Panel. See page <b>7</b>
Communication Errors when using Serial to Ethernet adapters	Serial to Ethernet adaptors do not have static IP addresses	Use static IP addresses for the Serial to Ethernet adapters, not DHCP. See page <b>19</b>
No Data displayed in Excel	Excel Macro security set too high	Set Excel Security to Medium. See page <b>21</b>
Memory Start Format Error	Instrument contains new firmware.  The format of memory starts has changed from version 1.13.1 ( <b>VAPOR PRO<sup>®</sup></b> and <b>VAPOR PRO<sup>®</sup> RX</b> models) and 1.15.1 ( <b>VAPOR PRO<sup>®</sup> FX</b> model) to versions 1.13.2/1.15.2.	Contact AZI Customer Service for an updated Memory Start Definitions file. See page <b>24</b>  Run the Data Conversion Utility included with the software to modify existing memory starts to be compatible with firmware versions 1.13.2/1.15.2. See <b>APPENDIX A – DATA CONVERSION UTILITY</b> on page <b>26</b> .
Format Error while downloading stored tests	Instrument contains new firmware.	Contact AZI Customer Service for an updated Stored Test Definition file. See page <b>24</b>

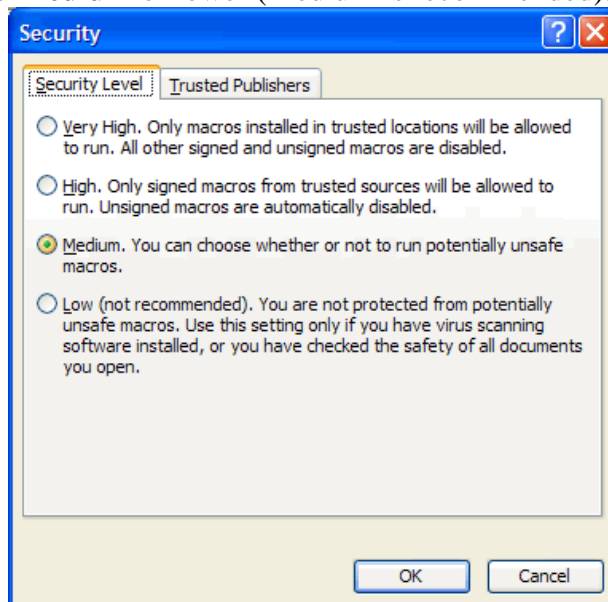
## Microsoft Excel® Macro Security

If no data is displayed in Microsoft Excel when you try to view instrument data, Excel's macro security may be set to High. This prevents the template from working.

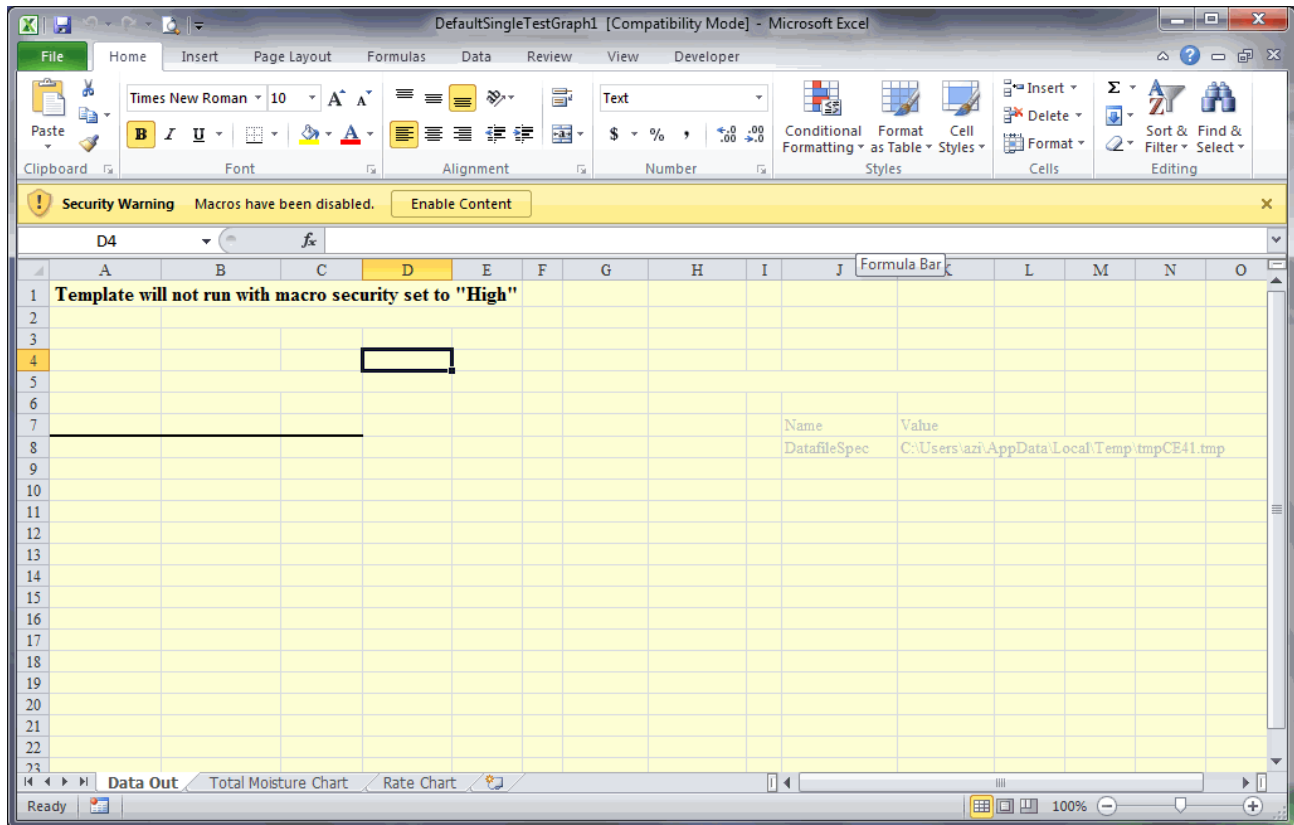
On Microsoft Office® 2003 or earlier: If this happens, open Excel, click the **Tools** menu, then the **Macro** sub menu, and click **Security...**



Set macro security to **Medium** or lower (Medium is recommended).



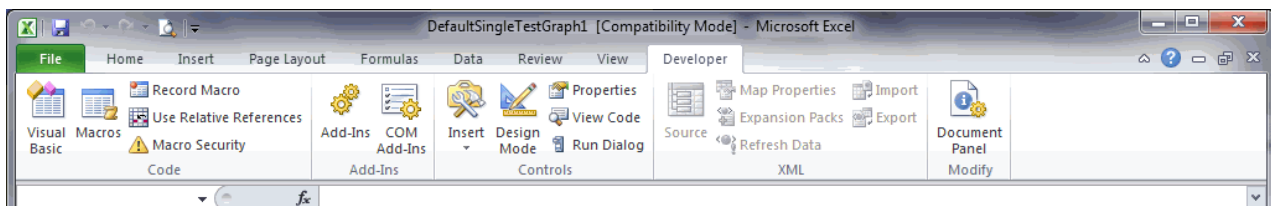
On Microsoft Office® 2007 or later: The Excel® template will not work if macro security settings are set to “High” and a screen similar to the one below will be displayed.




Macro security settings can be changed in the Trust Center, unless your IT department has changed the default settings to prevent any changes.

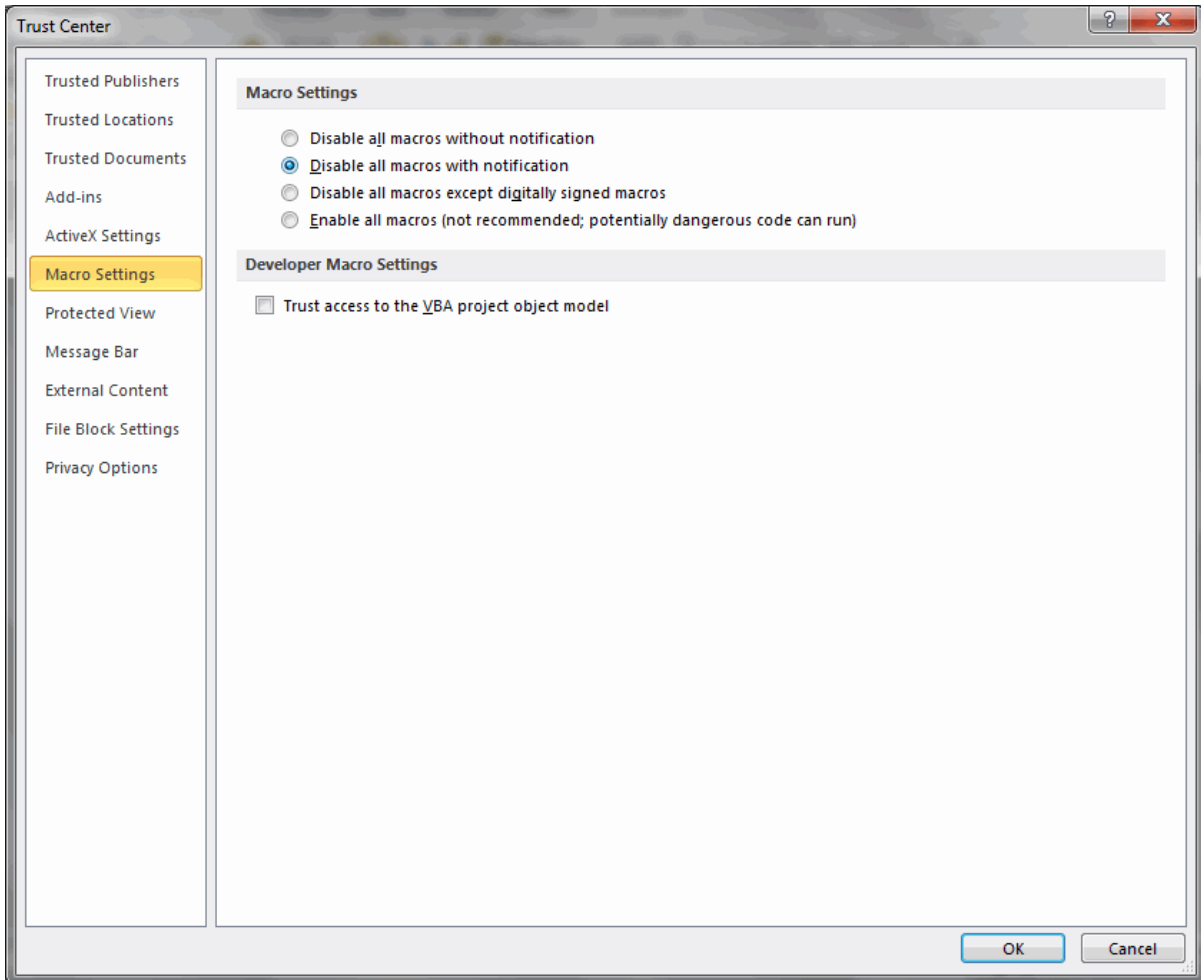
To update macro security settings:

1. On the **Developer** tab, in the **Code** group, click **Macro Security**.




In Office® 2007, if the **Developer** tab is not displayed, click the **Microsoft Office® Button** , click **Excel Options**, and then in the **Popular** category, under **Top options for working with Excel**, click **Show Developer tab in the Ribbon**.

2. In the **Macro Settings** category, under **Macro Settings**, click the option that you want. “Disable all macros with notification” is recommended. Excel® will then notify the user that a macro has been blocked, and provide the option to enable the macro.



These changes will only affect Excel® and do not affect any other Microsoft Office® program.

The Trust Center can also be accessed from the **Excel Options** dialog box. Click the **Microsoft Office® Button** , and then click **Excel Options**. In the **Trust Center** category, click **Trust Center Settings**, and then click the **Macro Settings** category.

## Memory Start Definition file

### Memory Start Definition file

The **Memory Start Definition** file contains information that the **VAPOR PRO<sup>®</sup> COMMUNICATIONS** Package uses to interpret memory start data downloaded from each model of **VAPOR PRO<sup>®</sup>**. Different models of **VAPOR PRO<sup>®</sup>**s have different memory start parameters. If a future version of the **VAPOR PRO<sup>®</sup>** instrument firmware changes the format of the memory starts to add features to the instruments, an updated Memory Start Definition file will be needed in order for the **VAPOR PRO<sup>®</sup> COMMUNICATIONS** Package to download, edit, and upload memory starts. If you receive a memory start format error from **VAPOR PRO<sup>®</sup> COMMUNICATIONS**, contact Arizona Instrument [Customer Service](#) for an updated Memory Start Definition file.

## Stored Test Definition file

### Stored Test Definition file

The **Stored Test Definition** file contains information that the **VAPOR PRO<sup>®</sup> COMMUNICATIONS** Package uses to interpret stored tests downloaded from each model of **VAPOR PRO<sup>®</sup>**. Different models of **VAPOR PRO<sup>®</sup>**s have different stored test parameters. If a future version of the **VAPOR PRO<sup>®</sup>** instrument firmware changes the format of the stored tests to add features to the instruments, an updated Stored Test Definition file will be needed in order for the **VAPOR PRO<sup>®</sup> COMMUNICATIONS** Package to download stored tests. If you receive a format error from **VAPOR PRO<sup>®</sup> COMMUNICATIONS** while downloading stored tests, contact Arizona Instrument [Customer Service](#) for an updated Stored Test Definition file.

## 14. Support

You can consult <http://www.azic.com> 24-hours-a-day to find the latest product information, product updates, and answers to common questions.

For technical support contact us directly, e-mail: [support@azic.com](mailto:support@azic.com)

Arizona Instrument LLC

3375 N Delaware Street

Chandler, AZ 85225

(800) 528-7411

(602) 470-1414

Fax (480) 804-0656

<http://www.azic.com>

email:

[azi@azic.com](mailto:azi@azic.com) - General

[intl@azic.com](mailto:intl@azic.com) - International

[support@azic.com](mailto:support@azic.com) - Customer Support

## 15. APPENDIX A – DATA CONVERSION UTILITY

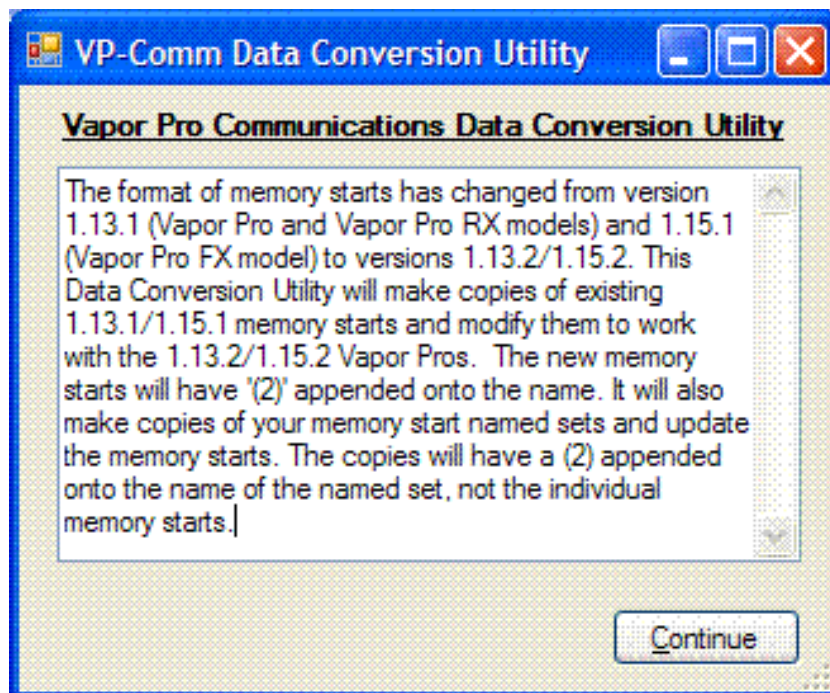
Available in **VAPOR PRO® COMMUNICATIONS** v1.0.1 and higher.

The format of the memory starts stored in the instrument has changed from version 1.13.1 (**VAPOR PRO®** and **VAPOR PRO® RX** models) and 1.15.1 (**VAPOR PRO® FX** model) to versions 1.13.2/1.15.2. The Data Conversion Utility will make copies of existing 1.13.1/1.15.1 memory starts and modify them to work with the 1.13.2/1.15.2 **VAPOR PRO®**'s. If you are transferring memory starts from a firmware version 1.13.1 or 1.15.1 instrument to a firmware version 1.13.2 or 1.15.2 instrument, and you receive a memory start format error, run the Data Conversion Utility included with **VAPOR PRO® COMMUNICATIONS** v1.0.1 to update your memory starts.

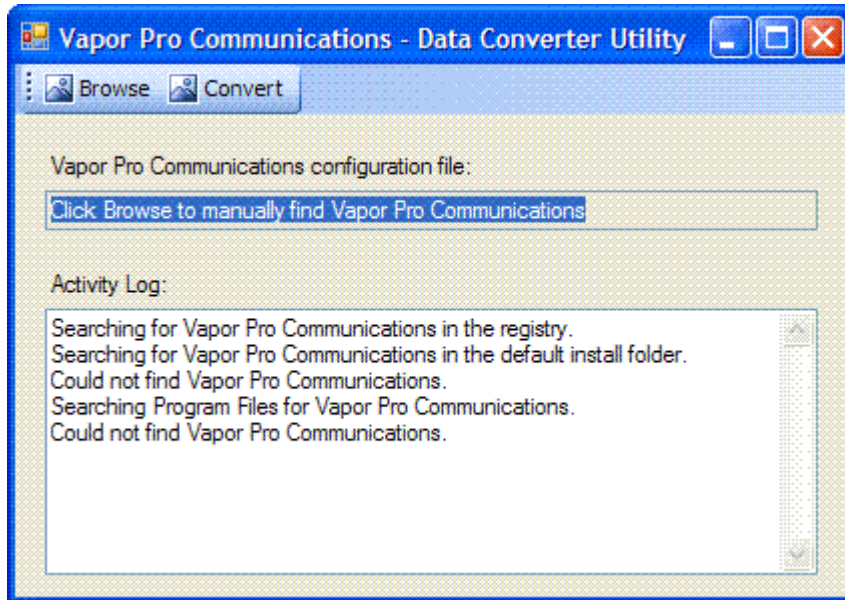
If the Data Conversion Utility is not listed in the AZI folder on the Start Menu, **VAPOR PRO® COMMUNICATIONS** must be upgraded to version 1.0.1 with Data Conversion Utility (or higher). Contact AZI at 800-528-7411 or 602-470-1414 for information. Before installing the new version of **VAPOR PRO® COMMUNICATIONS**, any previous versions of the software should be uninstalled using Add/Remove Programs in the Windows Control Panel. Uninstalling previous versions of the software will not erase any data stored on the PC by **VAPOR PRO® COMMUNICATIONS**.

To run the Data Conversion Utility, find the AZI folder on your Start Menu and select Data Conversion Utility.

This opening screen will be displayed.



Press “Continue” to proceed to the main window of the Data Conversion Utility, below.



Click “Browse” to search your computer for memory starts and memory start sets that need to be updated.

Then click “Convert” to modify the memory starts to be compatible with the updated firmware.

The new memory starts will have '(2)' appended onto the name. The utility will also make copies of your memory start named sets and update the memory starts. The copies of the memory start sets will have a (2) appended onto the name of the named set, not the individual memory starts.

Now the updated memory starts and memory start sets can be uploaded to the desired instrument using the **Send to Vapor Pro**<sup>®</sup> option, as explained in **Edit Memory Starts** on page **10**. Be sure to upload the new memory starts, which have '(2)' appended to the name. The new, updated memory starts can also be renamed using the Edit Name command, also available from the **Edit Memory Starts** window. See page **12** for more information on renaming memory starts.

## 16. APPENDIX B – SOFTWARE VERSION HISTORY

### V1.0.3:

- Verified compatibility with Windows® 7.
- Changed **VAPOR PRO® COMMUNICATIONS** to use “en-US” formatting when converting text dates and numbers into appropriate data types, instead of the local language settings, to prevent data conversion errors.
- Made the text boxes on the Options window editable.

### V1.0.1:

- Added support for the **VAPOR PRO®**'s new TIME then RATE ending criteria.
- Added the Data Conversion Utility to convert memory starts to the new format.

## **TRADEMARK AND COPYRIGHT PROTECTION**

The copyright and intellectual property rights of this software, **VAPOR PRO<sup>®</sup> COMMUNICATIONS** Package, and all its documentation, are owned by Arizona Instrument LLC, and are protected by copyright laws and international intellectual property rights treaties. You may not copy any portion of the software or documentation in any form, except to use this software in accordance with the terms of the agreement or to make one copy for backup purposes. You may not alter the software in any way. If copies of the documentation must be made, you should make them in printed form only.

**VAPOR PRO**, Arizona Instrument, AZI and the stylized AZI are all registered trademarks of Arizona Instrument LLC.

Instrument firmware is copyright protected.  
All specifications subject to change without notice.

Copyright 2003-2010, Arizona Instrument LLC. All Rights Reserved.

**Arizona Instrument LLC**  
**VAPOR PRO<sup>®</sup> COMMUNICATIONS Operation Manual**  
**Part Number 700-0098-C**  
**September 2010**

Windows<sup>®</sup>, Office<sup>®</sup> and Excel<sup>®</sup> are registered trademarks of Microsoft Corporation in the United States and other countries.

If you have any questions regarding the operation of this software, please call our toll free number (800) 528-7411. Internationally, call (602) 470-1414 or fax (480) 804-0656.